



# World of Automation

## Chapter 5: Human Machine Interfaces

**HIQUEL**<sup>®</sup>  
HIGH QUALITY ELECTRONICS

[www.hiquel.com](http://www.hiquel.com)

# WEB-studio



**WEB-Studio** is a powerful, integrated tool that exploits key features of Microsoft® Windows® NT/2000/XP and Windows® CE, and enables you to build full featured **SCADA** (Supervisory Control And DATA Acquisition) or **HMI** (Human-Machine Interface) applications for your Industrial and Building Automation business.

- ◆ Visualizations for all Microsoft-supported operating systems
- ◆ Standalone and Web applications
- ◆ Integrates Windows desktop applications
- ◆ View multiple Web Thin client applications
- ◆ Publishes real-time dynamic and animated graphic screens, trends, alarms, reports, and recipes to standard WEB browsers
- ◆ Uses an extensive symbol library to simplify development
- ◆ Work with a advanced math library with more than 100 standard functions
- ◆ Contains a powerful, flexible tags database with Boolean, Real, String, Array tags, classes and indirect pointers
- ◆ More than 200 communication drivers available for different devices
- ◆ Provides automatic language translation at runtime
- ◆ Embedded VBScript interface, allowing the user to create simple or sophisticated scripts and logics directly in the objects or background tasks.
- ◆ Exchange data between wireless and mobile devices
- ◆ Perform online configuration, debugging and remote application management.

## ordering information

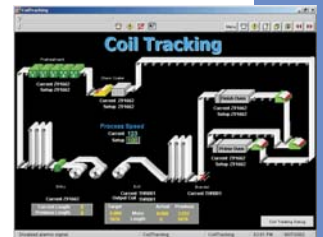
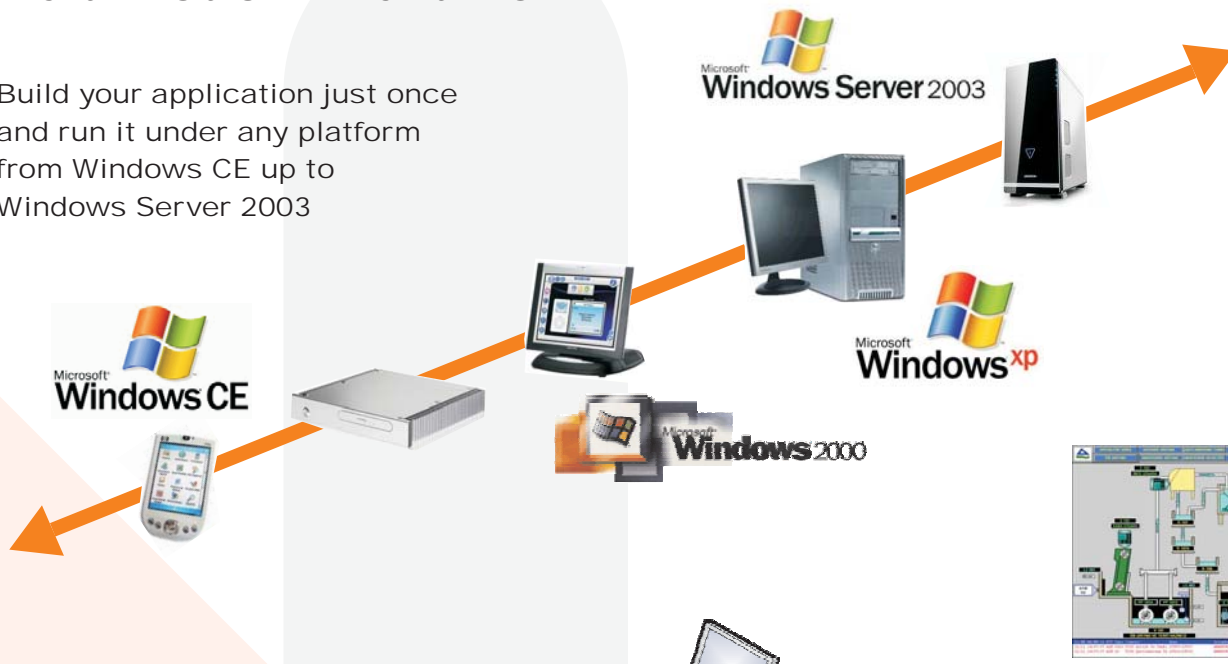
part no	tags	runtime/development	platform	simultaneous communication drivers
IWS-4000-NT-V6.1	4000	development	XP/2000/NT	5
IWS-1500-NT-V6.1	1500	development	XP/2000/NT	3
IWS-0150-NT-V6.1	150	development	XP/2000/NT	1
IWS-4000-NT-RT-V6.1	4000	runtime	XP/2000/NT	5
IWS-1500-NT-RT-V6.1	1500	runtime	XP/2000/NT	3
IWS-0150-NT-RT-V6.1	150	runtime	XP/2000/NT	1
IWS-4000-CE-RT-V6.1	4000	runtime	WinCe	5
IWS-1500-CE-RT-V6.1	1500	runtime	WinCe	3
IWS-0150-CE-RT-V6.1	150	runtime	WinCe	1

# SCADA



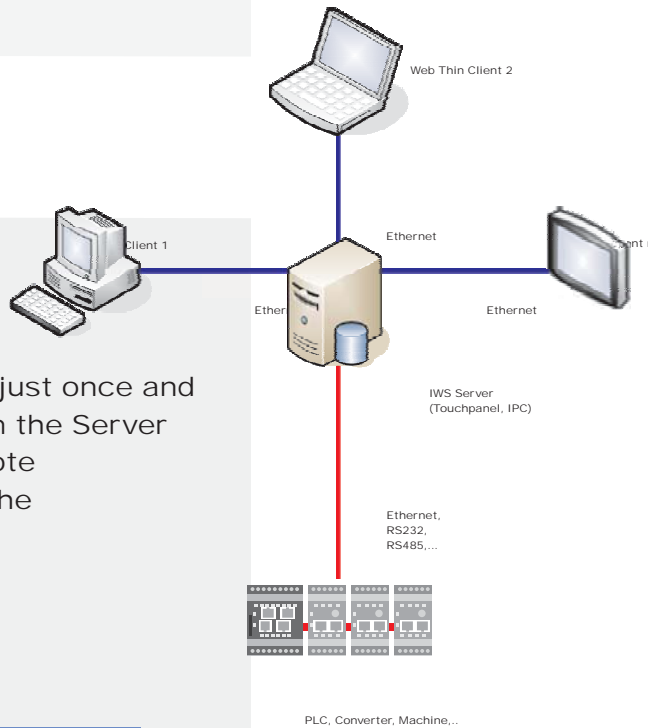
## Multi-Platform Runtime

Build your application just once and run it under any platform from Windows CE up to Windows Server 2003



## WEB Solution

Develop the application just once and access the screens from the Server station or from any remote Web Thin Client during the runtime.



## ordering information

part no	total concurrent web session
IWS-002-WS	2
IWS-004-WS	4
IWS-008-WS	8
IWS-016-WS	16
IWS-032-WS	32
IWS-064-WS	64
IWS-128-WS	128

