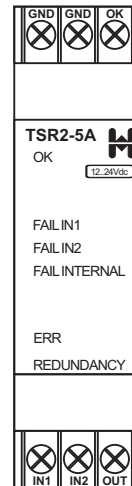


TSR2-5A

overview

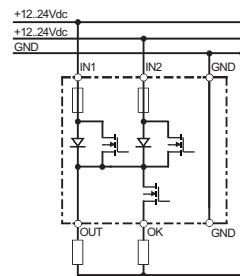
- ◆ uninterrupted switchover between two supplies
- ◆ status output for error monitoring
- ◆ LEDs for status display
- ◆ 22.5mm DIN rail mount housing



Function

Depending on the voltage level, the TSR2-5A switches supply 1 (terminal IN1) or supply 2 (terminal IN2) to the output (terminal OUT), with an additional status output (terminal OK) the supplies can be checked for correct function, status displays on the device (LEDs) support the control on site.

Schema:



specification

voltage range	-20%..+20%
duty cycle	100%
output	
current	max. 5A Dauerstrom max. 10A@t=1h max. 20A@t=0.1s
voltage drop	max. 180mV@5A
status output	
current	max. 1A
voltage drop	max. 1,1V@1A
screws	Pozidriv 1, Slot 4mm
screw tightening torque	0,4 Nm
operating conditions	-20 bis +60°C non condensing

ordering information

part no	Supply/relay	output	CS	housing type
TSR2-5A	24V= 360mW	2 semiconductor	-	A

Redundancy module

