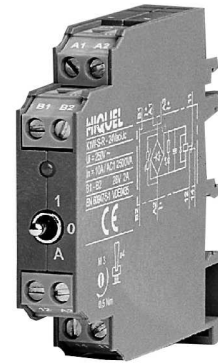


K1S/K1W

overview

- ◆ PLC transistor output to power switching converter
- ◆ relay output max. 10A SP relay
2A DP relay
- ◆ coil voltage 230V~ or 24V~
- ◆ common positive or negative
- ◆ LED indicator for relay status
- ◆ 12mm DIN rail mount housing



specification

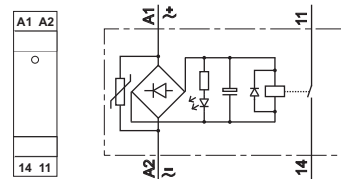
coil voltage	nominal voltage +10% / -15%		
duty cycle	100%		
nominal current	15mA		
suppressor circuit	freewheeling diode and varistor		
relay type	1	2	
output relay spec.	EN 60947-5-1		
le AC-15*	115V~	1,5A	0,1A
le AC-15*	230V~	1,5A	0,1A
le DC-13*	24V=	1,5A	1,5A
on delay	<8ms	<12ms	
off delay	<25ms	<25ms	
switching voltage	250V~ = 250V~		
input current	15A	3A	
continuous current (detached)	10A@+20°C	2A@+20°C	
continuous current (attached)	3A@+60°C	0,3A@+60°C	
min. switching capacity	>5mA	>1mA	
max. switching frequency	600/h	360/h	
mechanical	2 x 10 ⁶ resp. 1 x 10 ⁷ operations		
electrical	1 x 10 ⁵ resp. 1 x 10 ⁵ operations		
screw tightening torque	0,5Nm		
operating conditions	-20 to +60°C non condensing		

ordering information

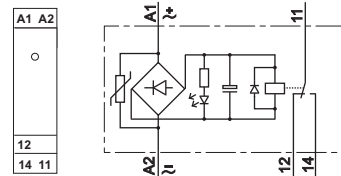
part no	supply	output	relay type
K1S 24Vac/dc	24V~ = 355mW	1 x SPNO	1
K1S 230Vac	230V~ = < 1,2W	1 x SPNO	1
K1W 24Vac/dc	24V~ = 355mW	SPCO	1
K1W 230Vac	230V~ = < 1,2W	SPCO	1
K2W 24Vac/dc	24V~ = 355mW	DPCO	2
K1W-S	24V~ = 355mW	SPCO	1
K1W-S-R	24V~ = 355mW	SPCO	1

other voltages on request

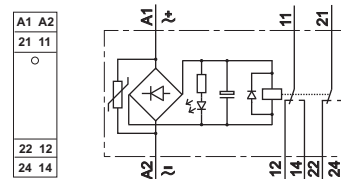
K1S



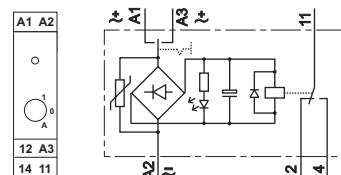
K1W



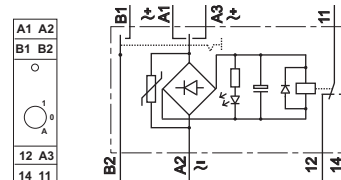
K2W



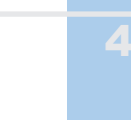
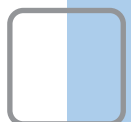
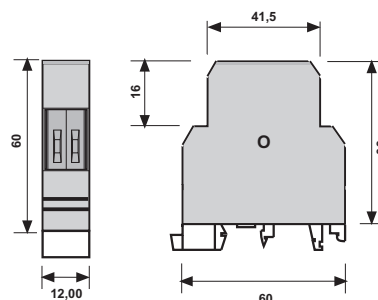
K1W-S



K1W-S-R



housing type



PLC interface relay in 12mm housing